



Selection



**MEET OUT NEW
LINE!**

Selection

You adore your pet. That's why you buy the food it loves. You know how delighted your fluffy friend will be to greet you at the front door!

And there is no better proof of his happiness for us than a plate licked clean. Satisfied muzzle, which is licking. And a tongue that wants to lick the owner as a sign of gratitude and love.



CLUB 4 PAWS SELECTION is a collection of new premium food lines of the **CLUB 4 PAWS** brand, which is undoubtedly already known for its quality. Delicate food to pamper your pets with exquisite flavors.



Selection



OUR CONCEPT Everything about taste

Visual branding

satisfied pets on packages, key visuals,
– all about joy brought by our food

Tastes

With "tasty" adjectives



Color

Identify lines

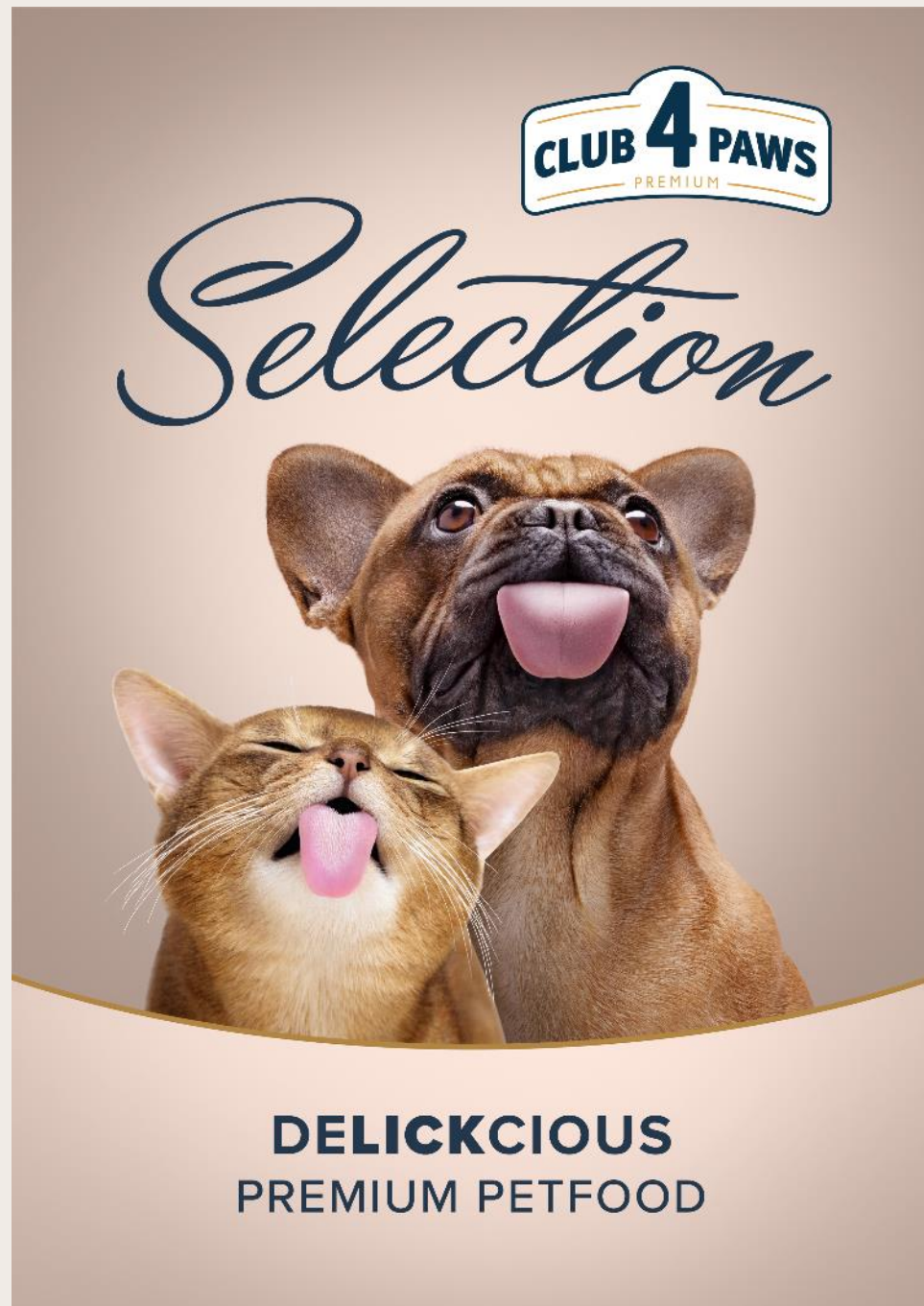
Line naming

Purr-For Slices, Meow-For Stripes,
Paws-Licking Kibbles, Tail-Wagging
Slices, Love-stare Pate

Icons

Icons for intuitively identifying taste

BRAND VISUALS



Selection

OUR CONCEPT COMMUNICATION

Everything about taste

Delicious description (example):

Warrning: the aroma will make your cat purr relentlessly happy once you open the package.
Juicy pieces. A delicate sauce or jelly to complete the taste.
This time kitty will lick the whole bowl and even the fingers. *Your fingers!*

DELICKCIOUS

In our slogan we combine two words **delicious** and **lick**.

It means that our products are so tasty that pets will lick not only bowls, but your fingers and it possible that your face to say thanks!

PRODUCT RANGE

Wet line



Dry line





Wet line for Cats

PURR-FOR SLICES

*A line for cats created using powerheat technology.
Has 4 positions, including 2 in jelly and 2 in sauce.*

Warning: the aroma will make your cat purr relentlessly happy once you open the package. Juicy pieces. A delicate sauce or jelly to complete the taste. This time kitty will lick the whole bowl and even the fingers. *Your fingers!*



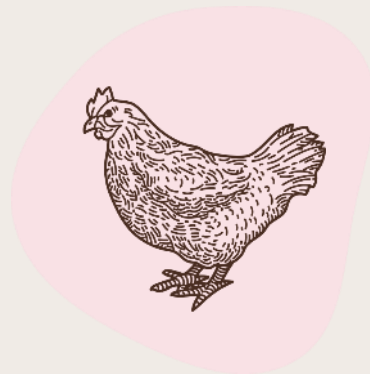
Wet line for Cats

MEOW-FOR STRIPES

*A line for cats represented by four new recipes.
Has 4 positions, including 2 in cream soup and 2 in sauce.*



Purrrfect strips made from selected meat ingredients and wrapped in a light cream soup. Melting right before your eyes as your kitty enjoys them. Meow! - as soon as you open the package. Meow - your pet is already licking the last drop of flavorsome sauce. The most demanding kitties and their owners will be delighted.



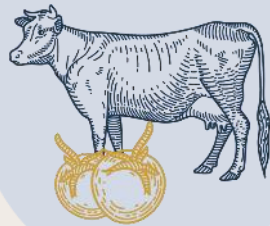


Wet line for Dogs

TAIL-WAGGING SLICES

*A line for dogs created using powerheat technology.
Has 4 positions, including 2 in jelly and 2 in sauce.*

They say *doggies wag* their tails twice as friendly when they see the CLUB 4 PAWS SELECTION package. The delicate texture of pieces with a *mouth-watering* sauce your pet wants to lick as soon as possible. And then - as always! - to lick your face as a sign of love and affection.



Wet line for Dogs

LOVE-STARE PATE

Delicate textured product



Perhaps the only pate the dogs even look at with love. Even if only for a short time. Sure, how can anyone resist when the *mouthwatering aroma* calls for a quick "lick!" And the perfect, delicate texture of the pate, combined with its balanced taste, tells dogs to not stop... And lick the bowl down!



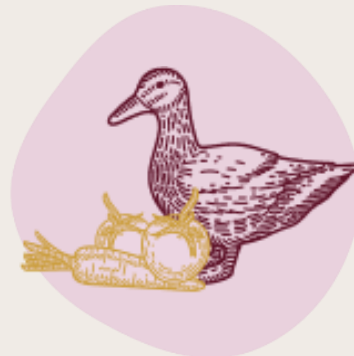
Dry line for Cats

PAWS-LICKING KIBBLES

Crispy granules in combination with pieces of natural vegetables.



Crunchy kibbles to make your kitties melt with pleasure! The enhanced dry food from Selection will fill your kitchen with a sound of a happy crunching. You will hear it from your fluffy pet constantly! We've added chunks of vegetables to these *delicious-smelling kibbles* for your cat to crunch on. A *crunchy-munchy pleasure!*



PACKED LIKE PRESENT IN CRAFT PAPER



Selection



PRODUCT BENEFITS vs competitors

WET LINE



DIFFERENT AND NEW FORMS OF PRODUCTS



UP TO 82%+ OF MEAT OR FISH INGREDIENTS IN EVERY PIECES



OMEGA 3 and OMEGA 6

DRY LINE



VEGETABLE PIECES IN KIBBLES

Wet line for Cats

PURR-FOR SLICES

ATLANTIC HERRING AND BALTIC HERRING IN JELLY

Composition: 62 % meat and animal derivatives in slices, fish and fish by-products (10 % atlantic herring, 10 % baltic herring in slices), vegetable protein extract, derivatives of vegetable origin, minerals, sugars, fruits (banana 0,1 %, hawthorn 0,03 %)*, vegetable (tomatoes 0,11 %)*, oils and fats (salmon oil 0,1 %), ginger* 0,005 %.

Analytical constituents: crude protein 9 %, crude fats 3,5 %, crude ash 2 %, crude fibre 0,3 %, humidity 83 %, calcium 0,35 %, phosphorus 0,3 %, omega-3 fatty acids 0,11 %, omega-6 fatty acids 0,18 %.

Additives (per 1 kg of product): vitamins: D3: 200 IU, E: 80 mg, K3: 0,2 mg, B1: 1 mg, B6: 0,15 mg, calcium-D-pantothenat: 1 mg, niacin: 0,6 mg, biotin: 0,05 mg, folic acid: 0,23 mg, choline: 1,9 g, taurine: 456 mg; trace elements: cooper: 0,64 mg, zinc 10 mg, manganese 3,12 mg, iodine 0,64 mg; glycine: 3,3 g; colorants. *Natural ingredients, dried.

Metabolizable energy per 100 g of pet food: 324,5 kJ (77,56 kcal).

VEAL IN VEGETABLE JELLY

Composition: 82 % meat and animal derivatives in slices, including 10 % of veal, vegetable 4,1 % (carrots**, tomatoes* 0,11 %), vegetable protein extract, minerals, derivatives of vegetable origin, oils and fats (salmon oil 0,2 %), Various sugars, fruits (banana 0,1 %, hawthorn 0,03 %)*, ginger* 0,005 %.

Analytical constituents: crude protein 9 %, crude fats 3,5 %, crude ash 2 %, crude fibre 0,3 %, humidity 83 %, calcium 0,35 %, phosphorus 0,3 %, omega-3 fatty acids 0,05 %, omega-6 fatty acids 0,2 %.

Additives (per 1 kg of product): vitamins: D3: 200 IU, E: 80 mg, K3: 0,2 mg, B1: 1 mg, B6: 0,15 mg, calcium-D-pantothenat: 1 mg, niacin: 0,6 mg, biotin: 0,05 mg, folic acid: 0,23 mg, choline: 1,9 g, taurine: 456 mg; trace elements: cooper: 0,64 mg, zinc 10 mg, manganese 3,12 mg, iodine 0,64 mg; glycine: 3,1 g; colorants. *Natural ingredients, dried.

Metabolizable energy per 100 g of pet food: 327,9 kJ (78,37 kcal). Shelf



Wet line for Cats

PURR-FOR SLICES

CHICKEN AND VEAL IN GRAVY

Composition: 82 % meat and animal derivatives in slices, including 41 % of chicken, 10 % of veal, vegetable protein extract, minerals, derivatives of vegetable origin, oils and fats (salmon oil 0,26 %), fruits (banana 0,1 %, hawthorn 0,03 %)*, vegetable (tomatoes 0,11 %)*, ginger* 0,005 %.

Analytical constituents: crude protein 9 %, crude fats 3 %, crude ash 2 %, crude fibre 0,3 %, humidity 83 %, calcium 0,35 %, phosphorus 0,3 %, omega-3 fatty acids 0,07 %, omega-6 fatty acids 0,21 %.

Additives (per 1 kg of product): vitamins: D3: 200 IU, E: 80 mg, K3: 0,2 mg, B1: 1 mg, B6: 0,15 mg, calcium-D-pantothenat: 1 mg, niacin: 0,6 mg, biotin: 0,05 mg, folic acid: 0,23 mg, choline: 1,9 g, taurine: 456 mg; trace elements: cooper: 0,64 mg, zinc 10 mg, manganese 3,12 mg, iodine 0,64 mg; glycine: 3,9 g; colorants. *Natural ingredients, dried.

Metabolizable energy per 100 g of pet food: 307,94 kJ (73,6 kcal).

RABBIT AND TURKEY IN GRAVY

Composition: 80 % meat and animal derivatives in slices, including 10 % of rabbit, 10 % of turkey, vegetable protein extract, derivatives of vegetable origin, minerals, oils and fats (salmon oil 0,18 %), fruits (banana 0,1 %, hawthorn 0,03 %)*, vegetable (tomatoes 0,11 %)*, ginger* 0,005 %.

Analytical constituents: crude protein 9 %, crude fats 3 %, crude ash 2 %, crude fibre 0,3 %, humidity 83 %, calcium 0,35 %, phosphorus 0,3 %, omega-3 fatty acids 0,07 %, omega-6 fatty acids 0,33 %.

Additives (per 1 kg of product): vitamins: D3: 200 IU, E: 80 mg, K3: 0,2 mg, B1: 1 mg, B6: 0,15 mg, calcium-D-pantothenat: 1 mg, niacin: 0,6 mg, biotin: 0,05 mg, folic acid: 0,23 mg, choline: 1,9 g, taurine: 456 mg; trace elements: cooper: 0,64 mg, zinc 10 mg, manganese: 3,12 mg, iodine: 0,64 mg; glycine: 3 g; colorants. *Natural ingredients, dried.

Metabolizable energy per 100 g of pet food: 303,26 kJ (72,48 kcal).



Wet line for Cats

MEOW-FOR STRIPES



BEEF IN BROCCOLI CREAM SOUP

Composition: 78 % meat and animal derivatives in strips, including 21 % of beef, cereals, vegetable protein extracts, minerals, vegetables (broccoli* 0,5 %, tomatoes* 0,11 %), derivatives of vegetable origin, oils and fats (salmon oil 0,3 %), fruit (banana 0,1 %, hawthorn 0,03 %)*, ginger* 0,005 %.

Analytical constituents: crude protein 7 %, crude fats 4 %, crude ash 1,2 %, crude fibre 0,5 %, humidity 83 %, calcium 0,15 %, phosphorus 0,1 %, omega-3 fatty acids 0,07 %, omega-6 fatty acids 0,5 %.

Additives (per 1 kg of product): vitamins: D3: 143 IU, E: 57 mg, K3: 0,14 mg, B1: 0,7 mg, B6: 0,11 mg, calcium-D-pantothenat: 0,7 mg, niacin: 0,43 mg, biotin: 0,04 mg, folic acid: 0,16 mg, choline 60 %: 1,5 g, taurine: 326 mg; trace elements: cooper: 0,5 mg, zinc 8 mg, manganese 2,5 mg, iodine 0,51 mg; glycine: 4,9 g; colorants. *Natural ingredients, dried.

Metabolizable energy per 100 g of pet food: 314,05 kJ (75,06 kcal).



TURKEY IN CREAM OF CARROT SOUP

Composition: 77 % meat and animal derivatives in strips, including 13 % of turkey, cereals, vegetable protein extracts, minerals, vegetables (carrot* 0,5 %, tomatoes* 0,11 %), derivatives of vegetable origin, oils and fats (salmon oil 0,3 %), fruit (banana 0,1 %, hawthorn 0,03 %)*, ginger* 0,005 %.

Analytical constituents: crude protein 7 %, crude fats 4 %, crude ash 1,2 %, crude fibre 0,5 %, humidity 83 %, calcium 0,15 %, phosphorus 0,1 %, omega-3 fatty acids 0,07 %, omega-6 fatty acids 0,5 %.

Additives (per 1 kg of product): vitamins: D3: 143 IU, E: 57 mg, K3: 0,14 mg, B1: 0,7 mg, B6: 0,11 mg, calcium-D-pantothenat: 0,7 mg, niacin: 0,43 mg, biotin: 0,04 mg, folic acid: 0,16 mg, choline: 1,5 g, taurine: 326 mg; trace elements: cooper: 0,5 mg, zinc: 8 mg, manganese: 2,5 mg, iodine: 0,51 mg; glycine: 4,9 g; colorants. *Natural ingredients, dried.

Metabolizable energy per 100 g of pet food: 311,58 kJ (74,47 kcal).



Wet line for Cats

MEOW-FOR STRIPES



CHICKEN IN GRAVY

Composition: 76 % meat and animal derivatives in strips, including 25 % of chicken, cereals, vegetable protein extracts, minerals, oils and fats (salmon oil 0,3 %), fruit (banana 0,1 %, hawthorn 0,03 %)*, vegetables (tomatoes 0,11 %)*, ginger* 0,005 %.

Analytical constituents: crude protein 7 %, crude fats 3,5 %, crude ash 1,2 %, crude fibre 0,25 %, humidity 85 %, calcium 0,15 %, phosphorus 0,1 %, omega-3 fatty acids 0,07 %, omega-6 fatty acids 0,5 %.

Additives (per 1 kg of product): vitamins: D3: 143 IU, E: 57 mg, K3: 0,14 mg, B1: 0,7 mg, B6: 0,11 mg, calcium-D-pantothenat: 0,7 mg, niacin: 0,43 mg, biotin: 0,04 mg, folic acid: 0,16 mg, choline: 1,5 g, taurine: 326 mg; trace elements: cooper: 0,5 mg, zinc 8 mg, manganese 2,5 mg, iodine 0,51 mg; glycine: 3,9 g; colorants. *Natural ingredients, dried.

Metabolizable energy per 100 g of pet food: 283,76 kJ (67,82 kcal).



RABBIT IN GRAVY

Composition: 76 % meat and animal derivatives in strips, including 13 % of rabbit, cereals, vegetable protein extracts, minerals, oils and fats (salmon oil 0,3 %), fruit (banana 0,1 %, hawthorn 0,03 %)*, vegetables (tomatoes 0,11 %)*, ginger* 0,005 %.

Analytical constituents: crude protein 7 %, crude fats 3,5 %, crude ash 1,2 %, crude fibre 0,2 %, humidity 85 %, calcium 0,15 %, phosphorus 0,1 %, omega-3 fatty acids 0,07 %, omega-6 fatty acids 0,5 %.

Additives (per 1 kg of product): vitamins: D3: 143 IU, E: 57 mg, K3: 0,14 mg, B1: 0,7 mg, B6: 0,11 mg, calcium-D-pantothenat: 0,7 mg, niacin: 0,43 mg, biotin: 0,04 mg, folic acid: 0,16 mg, choline: 1,5 g, taurine: 326 mg; trace elements: cooper: 0,5 mg, zinc 8 mg, manganese 2,5 mg, iodine 0,51 mg; glycine: 3,6 g; colorants. *Natural ingredients, dried.

Metabolizable energy per 100 g of pet food: 287,44 kJ (68,70 kcal).



Wet line for Dogs

TAIL-WAGGING SLICES



DUCK AND TURKEY IN GRAVY

Composition: 79 % meat and animal derivatives in slices, including 10 % of duck and 12,5 % of turkey, vegetable protein extract, derivatives of vegetable origin, cereals, minerals, oils and fats (salmon oil 0,16 %), fruits (banana 0,1 %, hawthorn 0,03 %)*, vegetable (tomatoes 0,11 %)*, ginger* 0,005 %.

Analytical constituents: crude protein 8 %, crude fats 4,2 %, crude ash 2 %, crude fibre 0,3 %, humidity 83 %, calcium 0,32 %, phosphorus 0,25 %, omega-3 fatty acids 0,07 %, omega-6 fatty acids 0,47 %.

Additives (per 1 kg of product): vitamins: D3: 188 IU, E: 37 mg, B1: 0,5 mg, calcium-D-pantothenat: 1,1 mg, biotin: 0,16 mg, folic acid: 0,23 mg, choline: 1,9 g, taurine: 325 mg; trace elements: cooper: 0,64 mg, zinc 10 mg, manganese 3,12 mg, iodine 0,64 mg; glycine: 3,1 g; colorants. *Natural ingredients, dried.

Metabolizable energy per 100 g of pet food: 321,85 kJ (76,92 kcal).



BEEF AND VEGGIES IN GRAVY

Composition: 68 % meat and animal derivatives in slices, including 10 % of beef, vegetable 4,1 % (carrots**, tomatoes* 0,11 %), vegetable protein extract, minerals, derivatives of vegetable origin, cereals, oils and fats (salmon oil 0,2 %), fruits (banana 0,1 %, hawthorn 0,03 %)*, ginger* 0,005 %.

Analytical constituents: crude protein 8 %, crude fats 3,5 %, crude ash 2 %, crude fibre 0,3 %, humidity 83 %, calcium 0,32 %, phosphorus 0,25 %, omega-3 fatty acids 0,06 %, omega-6 fatty acids 0,31 %.

Additives (per 1 kg of product): vitamins: D3: 188 IU, E: 37 mg, B1: 0,5 mg, calcium-D-pantothenat: 1,1 mg, biotin: 0,16 mg, folic acid: 0,23 mg, choline: 1,9 g, taurine: 325 mg; trace elements: cooper: 0,64 mg, zinc 10 mg, manganese 3,12 mg, iodine 0,64 mg; glycine: 3 g; colorants. *Natural ingredients, dried.

Metabolizable energy per 100 g of pet food: 324,12 kJ (77,47 kcal).



Wet line for Dogs

TAIL-WAGGING SLICES



SALMON AND MACKEREL IN GRAVY

Composition: 62 % meat and animal derivatives in slices, fish and fish by-products (10 % of salmon, 10 % of mackerel in slices), vegetable protein extract, derivatives of vegetable origin, minerals, cereals, oils and fats (salmon oil 0,1 %), fruits (banana 0,1 %, hawthorn 0,03 %)*, vegetable (tomatoes 0,11 %)*, ginger* 0,01 %.

Analytical constituents: crude protein 7,5 %, crude fats 4 %, crude ash 2 %, crude fibre 0,3 %, humidity 82 %, calcium 0,32 %, phosphorus 0,25 %, omega-3 fatty acids 0,21 %, omega-6 fatty acids 0,3 %.

Additives (per 1 kg of product): vitamins: D3: 188 IU, E: 37 mg, B: 0,5 mg, calcium-D-pantothenat: 1,1 mg, biotin: 0,16 mg, folic acid: 0,23 mg, choline: 1,9 g, taurine: 325 mg; trace elements: cooper: 0,64 mg, zinc 10 mg, manganese 3,12 mg, iodine 0,64 mg; glycine: 3 g; colorants. *Natural ingredients, dried.

Metabolizable energy per 100 g of pet food: 341,25 kJ (81,56 kcal).

Wet line for Dogs

LOVE-STARE PATE



WITH TENDER CHICKEN AND BEEF

Composition: meat and animal derivatives (of pork; of poultry; 10 % of chicken; of turkey; 4 % of beef), cereals, minerals.

Analytical constituents: crude protein 9 %, crude fat 5,5 %, crude ash 2,5 %, crude fibre 0,5 %, moisture 79 %.

Additives (per 1 kg of product): Vitamin D3 (3a671): 280 IU, Vitamin E (3a700): 35 mg; trace elements: zinc (3b605) 21 mg, copper (3b405): 1,8 mg, iodine (3b202) 1,4 mg, manganese (3b503) 0,8 mg.

Metabolizable energy per 100 g of pet food: 393,3 kJ (94 kcal).



WITH TENDER CHICKEN AND TURKEY

Composition: meat and animal derivatives (49 % of chicken; of beef; 7 % of turkey), minerals, derivatives of vegetable origin (0,1 % inulin).

Analytical constituents: crude protein 10,5 %, crude fat 6,5 %, crude ash 1,8 %, crude fibre 0,5 %, moisture 77 %.

Additives (per 1 kg of product): Vitamin D3 (3a671): 280 IU, Vitamin E (3a700): 35 mg, Biotin (3a880): 210 µg; trace elements: zinc (3b605) 21 mg, copper (3b405): 1,8 mg, iodine (3b202) 1,4 mg, manganese (3b503) 0,8 mg.

Metabolizable energy per 100 g of pet food: 456,1 kJ (109 kcal).



Wet line for Dogs

LOVE-STARE PATE



WITH TENDER CHICKEN AND LAMB

Composition: meat and animal derivatives (of pork; of poultry; 10 % of chicken; 4 % of lamb; of turkey), cereals, minerals.

Analytical constituents: crude protein 9 %, crude fat 5,5 %, crude ash 2,5 %, crude fibre 0,5 %, moisture 79 %.

Additives (per 1 kg of product): Vitamin D3 (3a671): 280 IU, Vitamin E (3a700): 35 mg; trace elements: zinc (3b605) 21 mg, copper (3b405): 1,8 mg, iodine (3b202) 1,4 mg, manganese (3b503) 0,8 mg.

Metabolizable energy per 100 g of pet food: 393,3 kJ (94 kcal).



WITH TENDER TURKEY AND LAMB

Composition: meat and animal derivatives (of poultry; of pork; 7 % of turkey; 4 % of lamb), minerals, derivatives of vegetable origin (0,1 % inulin).

Analytical constituents: crude protein 10,5 %, crude fat 6,5 %, crude ash 1,8 %, crude fibre 0,5 %, moisture 77 %.

Additives (per 1 kg of product): Vitamin D3 (3a671): 280 IU, Vitamin E (3a700): 35 mg, Biotin (3a880): 210 µg; trace elements: zinc (3b605) 21 mg, copper (3b405): 1,8 mg, iodine (3b202) 1,4 mg, manganese (3b503) 0,8 mg.

Metabolizable energy per 100 g of pet food: 456,1 kJ (109 kcal).



Dry line for Cats

PAWS-LICKING KIBBLES

WITH TURKEY AND VEGETABLES



COMPOSITION: meat and animal derivatives of poultry 39 % (including 4 % of turkey), cereals (maize, rice), vegetable protein extract (maize gluten), vegetable by-products (sugar beet pulp, ginger* 0,01 %), vegetables (yellow peas, carrots* 4 %, tomatoes 0,2 %), oils and fats (poultry fat (preserved with tocopherols), salmon oil 0,5 %), minerals, brewery yeast, fruits (banana* 0,23 %, hawthorn* 0,065 %), seeds (flax 0,26 %).

ANALYTICAL CONSTITUENTS: crude protein 32,5 %, crude fat 15 %, crude ash 7 %, crude fibre 2,0 %, calcium 1,2 %, phosphorus 1,1 %, moisture 9 %, omega-3 fatty acids 0,3 %, omega-6 fatty acids 3,44 %.

ADDITIVES (per 1 kg of product): vitamin A (3a672a): 10 312 IU; vitamin D3 (3a671): 1 031 IU; vitamin E (3a700): 516 mg, vitamin C (3a300): 258 mg, vitamin K3 (3a710): 1 mg, vitamin B1 (3a820): 5,1 mg, vitamin B2 (riboflavin): 3,9 mg, calcium-D-pantothenate (3a841): 4,1 mg, niacin (3a314): 36,7 mg, vitamin B6 (3a831): 3,06 mg, folic acid (3a316): 0,98 mg, vitamin B12 (cyanocobalamin): 0,14 mg, biotin (3a880): 0,07 mg, choline chloride (3a890) 60 %: 3,2 g, zinc (3b604): 83,2 mg, iron (3b103): 30,46 mg, manganese (3b503): 24,3 mg, cooper (3b405): 7,7 mg, taurine (3a370): 2 072 mg, antioxidants, preservative permitted in the EU. *Natural ingredients, dried.

Metabolizable energy per 100 g of pet food: 1 599,12 kJ (382,2 kkal).

WITH DUCK AND VEGETABLES



COMPOSITION: meat and animal derivatives of poultry 39 % (including 4 % of duck), cereals (maize, rice), vegetable protein extract (maize gluten), vegetable by-products (sugar beet pulp, ginger* 0,01 %), vegetables (yellow peas, carrots* 4 %, tomatoes 0,2 %), oils and fats (poultry fat (preserved with tocopherols), salmon oil 0,5 %), minerals, brewery yeast, fruits (banana* 0,23 %, hawthorn* 0,065 %), seeds (flax 0,26 %).

ANALYTICAL CONSTITUENTS: crude protein 32,5 %, crude fat 15 %, crude ash 7 %, crude fibre 2,0 %, calcium 1,2 %, phosphorus 1,1 %, moisture 9 %, omega-3 fatty acids 0,3 %, omega-6 fatty acids 3,44 %.

ADDITIVES (per 1 kg of product): vitamin A (3a672a): 10 312 IU; vitamin D3 (3a671): 1 031 IU; vitamin E (3a700): 516 mg, vitamin C (3a300): 258 mg, vitamin K3 (3a710): 1 mg, vitamin B1 (3a820): 5,1 mg, vitamin B2 (riboflavin): 3,9 mg, calcium-D-pantothenate (3a841): 4,1 mg, niacin (3a314): 36,7 mg, vitamin B6 (3a831): 3,06 mg, folic acid (3a316): 0,98 mg, vitamin B12 (cyanocobalamin): 0,14 mg, biotin (3a880): 0,07 mg, choline chloride (3a890) 60 %: 3,2 g, zinc (3b604): 83,2 mg, iron (3b103): 30,46 mg, manganese (3b503): 24,3 mg, cooper (3b405): 7,7 mg, taurine (3a370): 2 072 mg, antioxidants, preservative permitted in the EU. *Natural ingredients, dried.

Metabolizable energy per 100 g of pet food: 1 599,12 kJ (382,2 kkal).

THANKS!

