



The tasty prebiotic drink that supports immunity. Formulated by veterinarians.



Why is immune+ effective?



70% of natural resistance or immunity is developed in the intestines. Viyo Immune+ contains the prebiotics FOS and inulin. These are natural fibres which feed the good bacteria in the intestines so that the intestines of dogs and cats work more efficiently. As such, the useful nutrients

are optimally absorbed and utilised, thereby effectively supporting immunity.

98% of the prebiotic fibres enter the intestines as active ingredients, without being broken down in the stomach because immune+ is a drink.



When can we recommend immune+?

✓ As a healthy daily habit

Immune+ works preventively by supporting the immune system in the intestine optimally at all times.



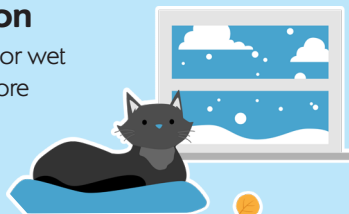
✓ In case of stress

Stress can occur due to a change of environment, interior, travelling, changed family composition or living with several pets.



✓ At the change of season

The transition from warm to cold or wet weather makes cats and dogs more susceptible to infections. In summer, dogs and cats explore the outside world and are exposed to numerous sources of infection. At every change of season, a daily course of Viyo immune+ for 2 weeks is recommended.



✓ For puppies and kittens

The immune system is only fully developed after a few weeks or months. In the meantime, immune+ provides the necessary support while they get used to their new environment and food.



✓ When changing food or diet

A change of diet can disrupt the stomach and intestinal system, weakening the absorption of nutrients. Immune+ helps to support proper functioning.



✓ For older animals

Due to the decrease in absorption capacity of the intestine, immunity weakens. Stimulating the absorption of nutrients noticeably reduces the risk of infections.



Frequently asked questions

They are usually about health concerns for cats and dogs such as **gastrointestinal complaints, skin problems, lack of vitality, drinking too little or poor appetite**, which all have an adverse effect on their resistance. immune+ supports their resistance by stimulating the absorption of nutrients in the intestines.



Fourteen handy daily portions in each box

An optimal result is reached by serving Immune+ 14 days in a row.



immune+ is best served in the morning before meals.

immune+ is suitable for all dogs and cats, except those with a chicken allergy.

